

Warranty card

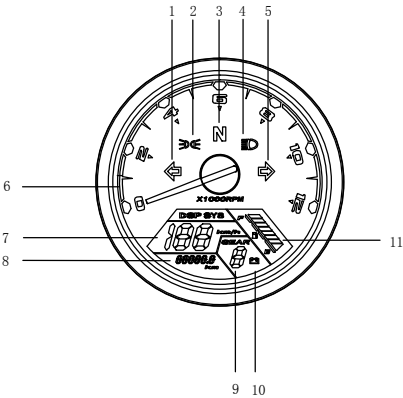
User description		Contacts	
User address		Contact phone	
Product name			
Purchase date			
Maintenance record	Date	Failure causes and treatment	

Warranty description

1、 Since you buy the products,if you set up and use the products as the products use description,our company repair for free in one ear,after one year,we only charge the repairment for repair fee.

2、 Artificial damage, disassemble itself, open standard, improper use of all the appearance of the damage is not within the scope of the warranty.

Speedometer specifications



- 1、 Turning left
- 2、 Location lamp
- 3、 Neutral gear
- 4、 High beam
- 5、 Turning right
- 6、 Rotation rate
- 7、 Speed
- 8、 Mileage accumulation
- 9、 Gear
- 10、 Low battery voltage alarm
- 11、 Oil Level

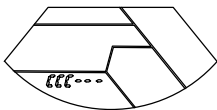
Button operation function:

There is only one button(at the bottom of the speedometer).  
Switch between odo/trip mileage accumulation:  
Short press the button to switch between the odo/trip mileage accumulation.

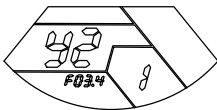
Trip mileage zero clean:  
Under the trip mode,long press the button to zero clean the trip.

Switch between inch and metric:  
Under the odo mode,long press the button to switch between inch and metric.

Parameter setting:  
When the speedometer is powered off,long press the button,power on,enter the setting mode.At this moment,odo/trip mileage accumulation positions shows "ccc—" (interface 1),the first "-" flashes,short press the button to add or change the number in the flashing position,long press the button to shift.Adjust "—" to 123 to enter the parameter setting mode (interface 2),at this moment,speed position shows cylinder speed "y2" (2 means 2 cylinders,16.6HZ) , gear position shows "1 or 5" (1 means the oil level sensor with 2 wires, 5 means the oil level sensor with 3 wires) , speed accumulation position shows "F03.4" (F means frequency,which is used to change the speed) , after setting,long press the button to save and exit.

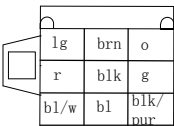


interface 1

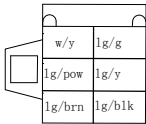


interface 2

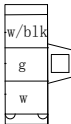
【Connection description】 LOOK FROM OUTPUT TERMINAL



Nine-core male tab



Six Kong Fang instrument inserted



Three Kong Fang inserted instrument



Two Kong Fang inserted instrument

- lg: Turning right
- brn: Position lamp
- o: Turning left
- r: Connect to power
- blk: Electric door lock
- g: Gnd
- bl/w: Oil
- bl: High beam
- blk/pur:Speed signal

- w/y: neutral
- lg/g: Three gear
- lg/pow: first gear
- lg/y: fourth gear
- lg/brn:Second gear
- lg/blk:The fifth gear

- w/blk: The sensor power supply
- light green:lg
- g: The sensor g
- powder: pow
- w: The speed signal
- green: g
- yellow: y
- black: blk
- white: w
- orange: o
- blue: bl
- purle: pur
- red: r